

What keeps me up at night?



Clearwater Recharge Facilities



CAP Water Allocation:

- 144,720 AF/yr

Recharge Capacity:

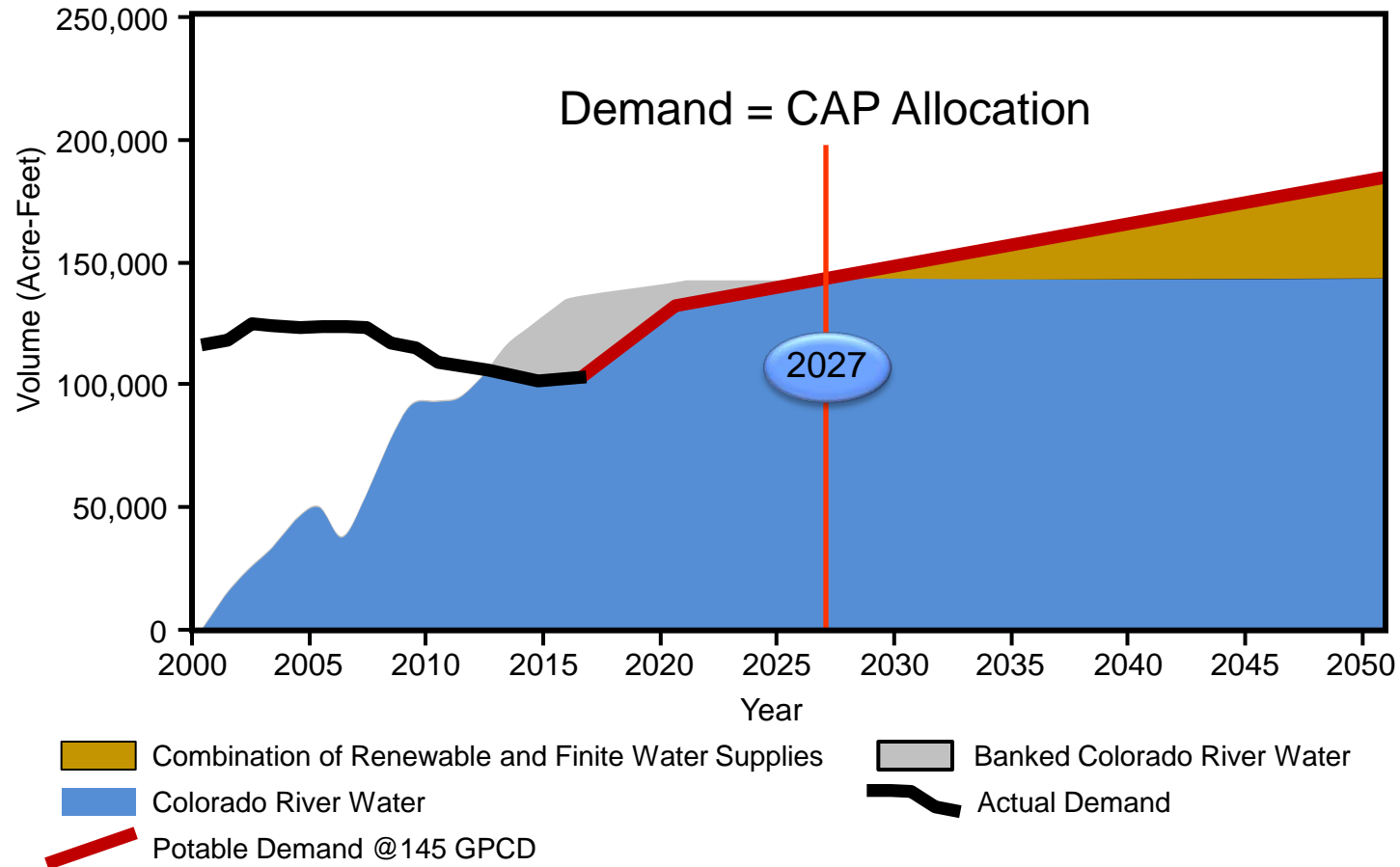
- CAVSARP 80KAF/yr
- SAVSARP 60KAF/yr
- PMRRP 30KAF/yr

CAP Water Usage:

- 100KAF/yr



Potable Water Use Projection to 2050



The data were provided to TW by PAG - PAG sources the data as:

University of Arizona, Eller College of Management, Economic and Business Research Center - 2011 3rd Quarter Forecast for Pima County

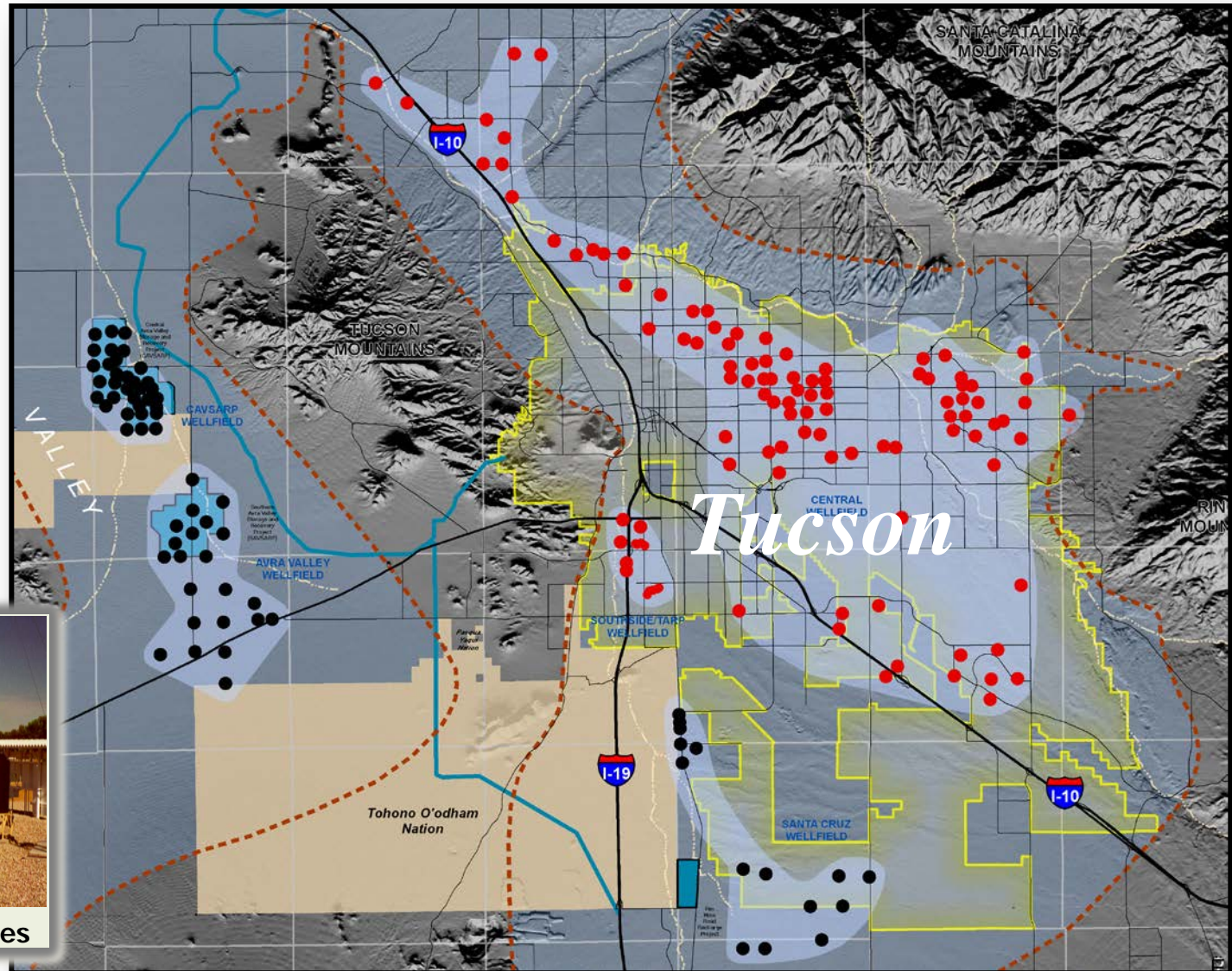
Tucson Water Production Wells



Production Well
Drill Rig



212 Production Well sites



● Clearwater Recovery Wells (60)

● Clearwater Recovery Wells (152)